

FLOOR PLAN - COMMONS BUILDING
 1/8" = 1'-0"



- LEGEND**
- CONG. BLOCK WALL
 - BRICK & SPLIT FACE BLOCK WALL

NOTE:
 ALL EXTERIOR WINDOWS, EXCLUDING WINDOW (7), ARE TO RECEIVE HORIZONTAL BLINDS - SEE SPECS.



5.2

AS BUILT DRAWING

Vertical text on the right margin:

- DATE: 6-22-88
- PROJECT NO: 8831
- DATE: 6-22-88
- PROJECT NO: 8831
- DATE: 6-22-88
- PROJECT NO: 8831



**HVAC RENOVATIONS TO
STUDENT UNION
UNIVERSITY OF ARKANSAS AT PINE BLUFF
PINE BLUFF, ARKANSAS**

C&B JOB NUMBER:
100695.805
DATE ISSUED:
4/24/2006

ISSUES:

REVISIONS:

SHEET CONTENTS:

FIRST FLOOR
REFLECTED CEILING PLAN
ARCHITECTURAL

SHEET NUMBER:

A-1.1

SHT. OF. TOTAL

GENERAL NOTES

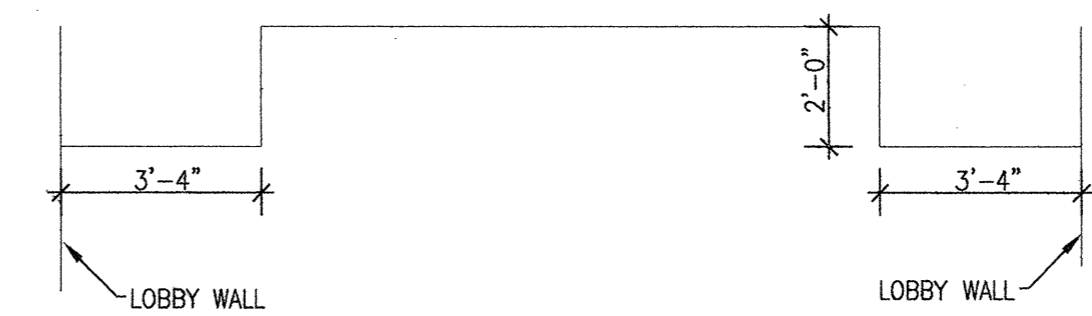
- A. EXISTING CEILINGS TO BE REMOVED BY OTHERS, NOT UNDER THIS CONTRACT.
- B. CONTRACTOR SHALL COORDINATE ANY CEILING MOUNTED ITEMS NOT DEPICTED THAT ARE TO REMAIN AND BE INSTALLED BY OWNER.
- C. INSTALL NEW 2'X2' ACOUSTIC LAY-IN CEILING AS SHOWN.
- D. CONTRACTOR TO INSTALL NEW GYP BOARD COFFERED CEILING TO MATCH EXISTING CONFIGURATION. SEE DETAILS 3, AND 4. SEE SECTIONS 1 AND 2.

LEGEND:

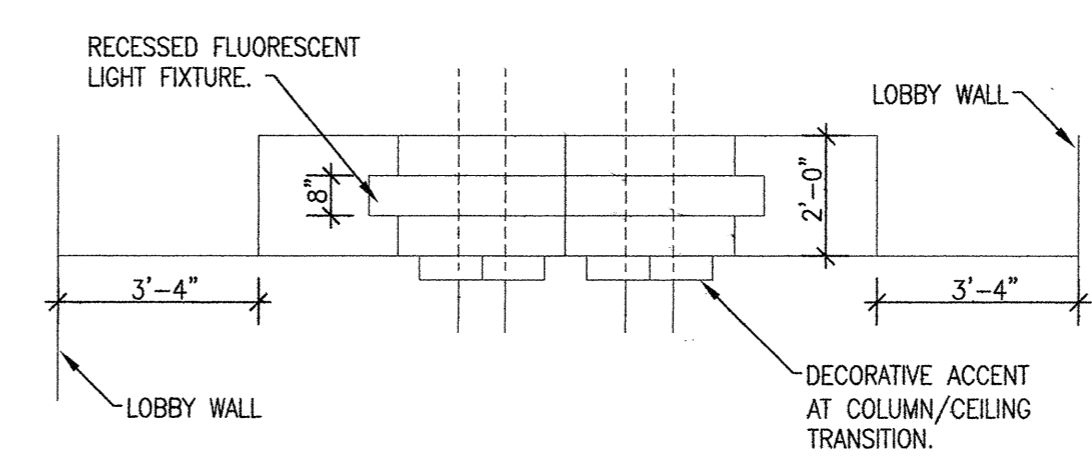
- 2'X4' FLUORESCENT LIGHT FIXTURE
- 4' FLUORESCENT LIGHT FIXTURE
- 3' FLUORESCENT LIGHT FIXTURE
- TRACK LIGHTING
- INCANDESCENT LIGHT FIXTURE
- CEILING FAN
- 2'X4' HVAC RETURN
- 2'X2' HVAC SUPPLY
- 4'X48" HVAC SUPPLY
- 2'X2' HVAC RETURN
- 1'X1' HVAC SUPPLY
- 1'X1' EXHT FAN
- HVAC SUPPLY WALL VENT
- CCTV SECURITY CAMERA
- EMERGENCY EXIT SIGN
- PA SPEAKER
- FIRE ALARM

CEILING TILES:

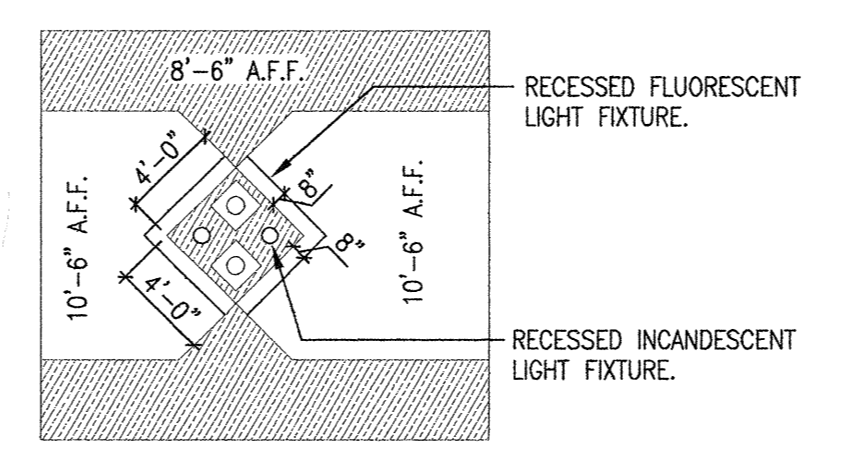
- TYPE "A": 2'X2' LAY-IN ACOUSTIC CEILING TILE FOR GENERAL USE.
 - TYPE "B": 2'X2' LAY-IN ACOUSTIC CEILING TILE FOR HIGH NOISE REDUCTION.
 - TYPE "C": 2'X2' LAY-IN CEILING TILE WITH WASHABLE SURFACE.
- REFER TO PROJECT SPECIFICATIONS FOR DETAILED DESCRIPTIONS OF CEILING TILES.



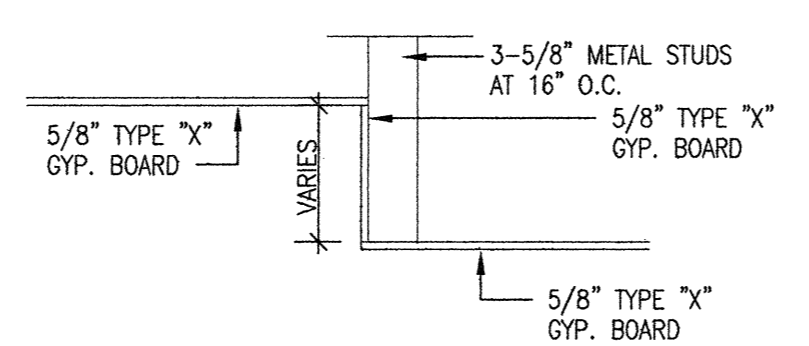
1 SECTION AT COFFER
SCALE: N.T.S.



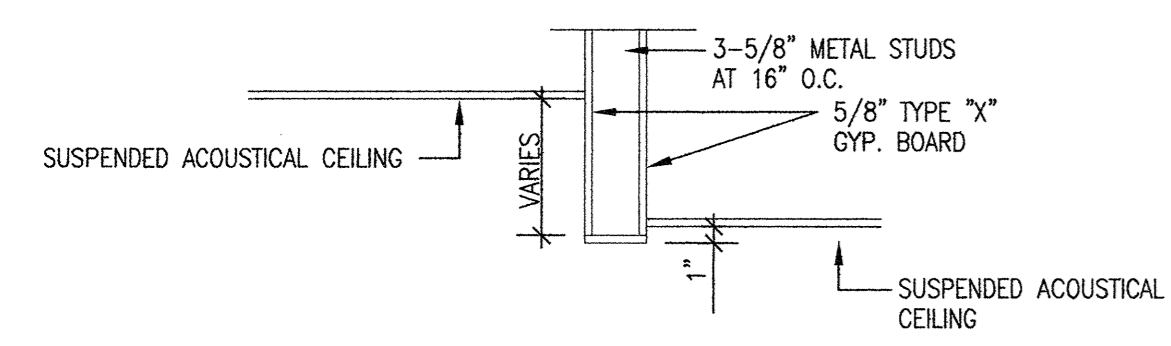
2 SECTION AT COLUMN ACCENT
SCALE: N.T.S.



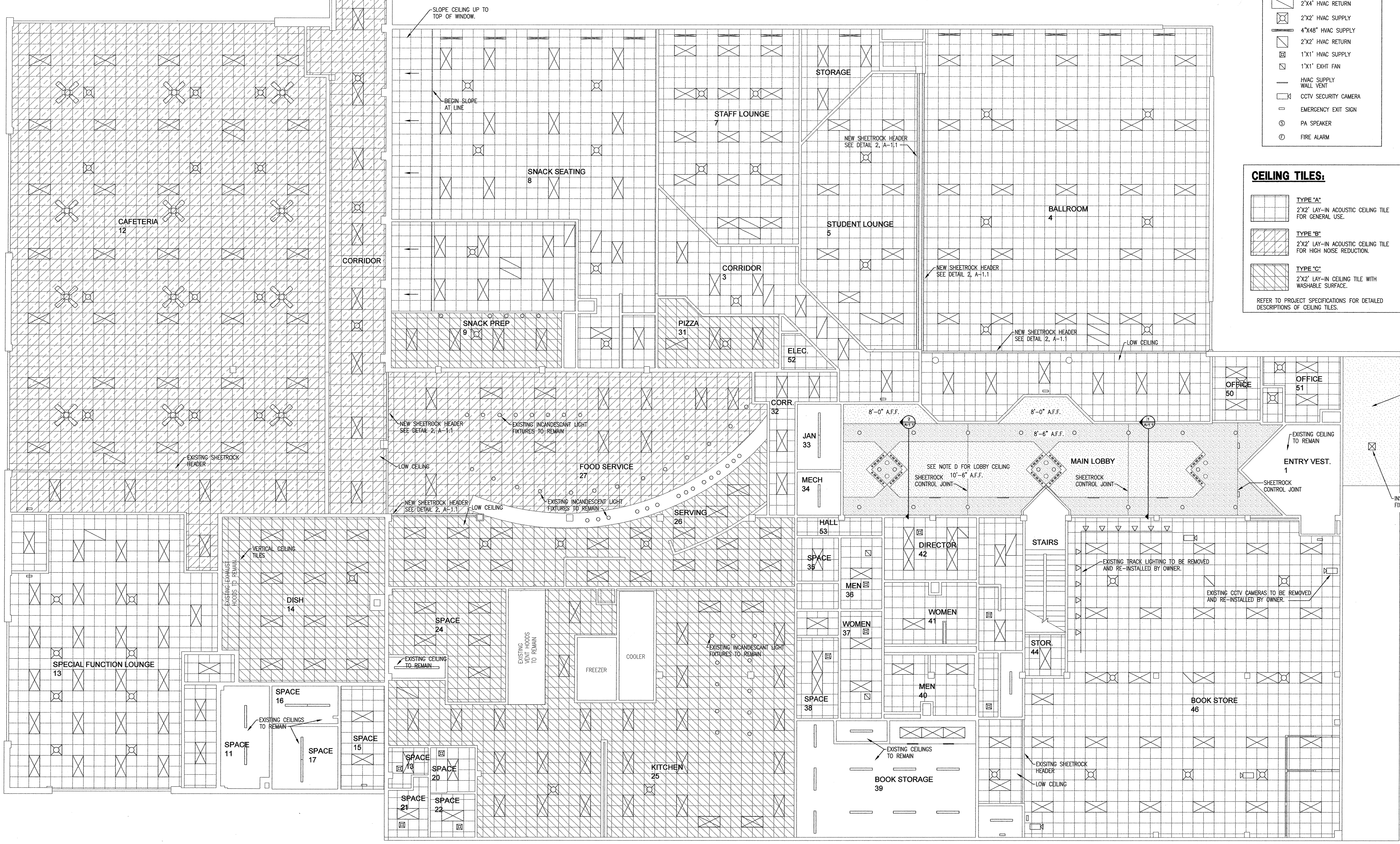
4 COFFERED CEILING DETAIL
SCALE: 1/8" = 1'-0"



3 SHEETROCK CEILING DETAIL
SCALE: N.T.S.

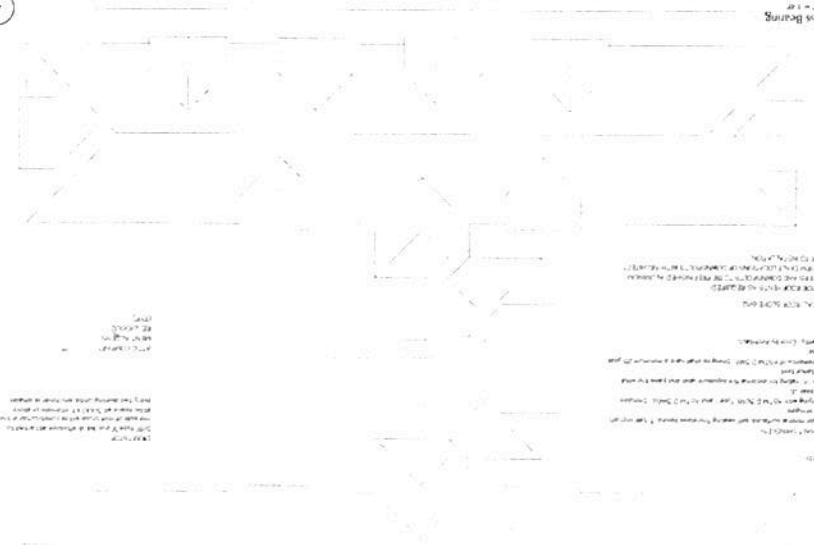


2 CEILING TRANSITION DETAIL
SCALE: N.T.S.



1 FIRST FLOOR REFLECTED CEILING PLAN - ARCHITECTURAL
SCALE: 1/8" = 1'-0"

3 Trust Beams



4 Code Info

Code	Section	Description
100	100	GENERAL REQUIREMENTS
101	101	PERMITS AND APPROVALS
102	102	DESIGN STANDARDS
103	103	LOADS
104	104	FOUNDATIONS
105	105	CONCRETE
106	106	STEEL
107	107	WOOD
108	108	GLASS
109	109	MECHANICAL
110	110	ELECTRICAL
111	111	PLUMBING
112	112	MECHANICAL, ELECTRICAL, AND PLUMBING (MEP)
113	113	ENERGY EFFICIENCY
114	114	ACCESSIBILITY
115	115	ENVIRONMENTAL
116	116	SAFETY
117	117	OTHER

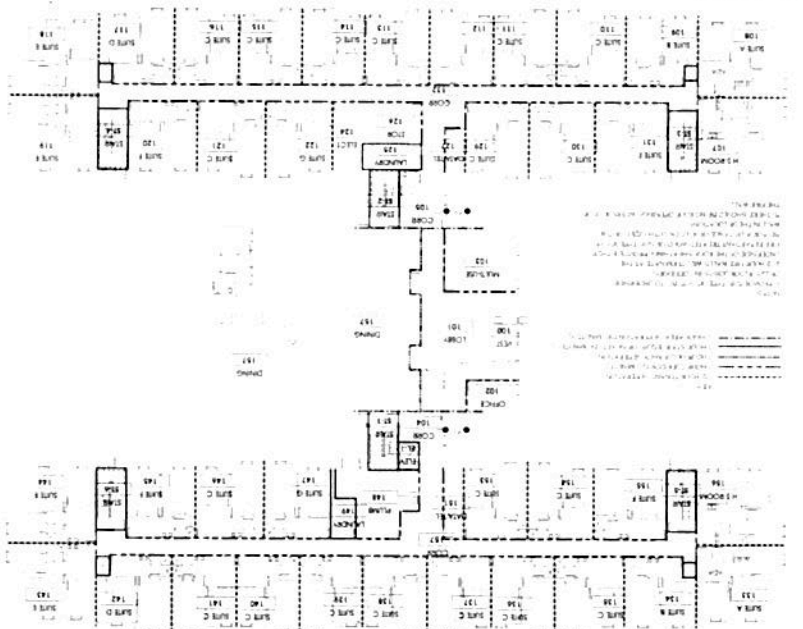
FIRE RESISTIVE REQUIREMENTS

Item	Requirement
1	ALL STRUCTURAL STEEL SHALL BE PROTECTED WITH 2" MINIMUM THICKNESS OF Gypsum Board.
2	ALL CONCRETE SHALL BE PROTECTED WITH 2" MINIMUM THICKNESS OF Gypsum Board.
3	ALL WOOD SHALL BE PROTECTED WITH 1/2" MINIMUM THICKNESS OF Gypsum Board.
4	ALL GLASS SHALL BE PROTECTED WITH 1/2" MINIMUM THICKNESS OF Gypsum Board.

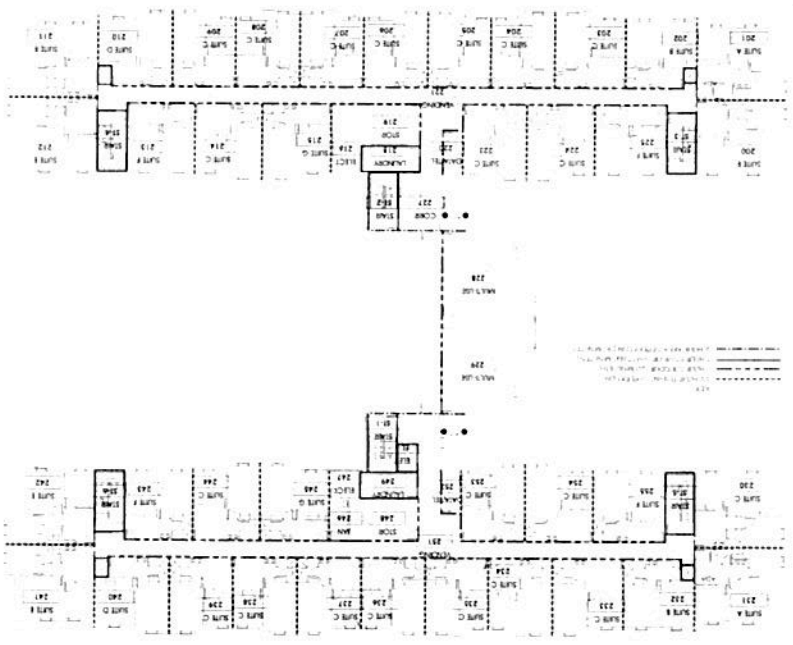
FIRE PROTECTION INFORMATION

Item	Requirement
1	ALL STRUCTURAL STEEL SHALL BE PROTECTED WITH 2" MINIMUM THICKNESS OF Gypsum Board.
2	ALL CONCRETE SHALL BE PROTECTED WITH 2" MINIMUM THICKNESS OF Gypsum Board.
3	ALL WOOD SHALL BE PROTECTED WITH 1/2" MINIMUM THICKNESS OF Gypsum Board.
4	ALL GLASS SHALL BE PROTECTED WITH 1/2" MINIMUM THICKNESS OF Gypsum Board.

1 Level 1 - Code Plan



2 Level 2 & 3 - Code Plan



17 16 15 14 13 12 11 10 9 8 7 6 5 4 3 2 1

NEW STUDENT HOUSING
UNIVERSITY OF ARKANSAS AT PINE BLUFF
NORTH STREET AND CASH STREET
PINE BLUFF, ARKANSAS 71601

Scale: 1/8" = 1'-0"

DATE: 05/21/11

PROJECT: NEW STUDENT HOUSING

HOURLY

Architect's Seal

G001